



# MCS ELLY II

## GENERAL

Type:	Damen Multicat 3013
Built:	May 2015
Class:	Bureau Veritas I @ Hull Mach Tug Unrestricted Navigation AUT-UMS
Flag:	UK
Dimensions	O.A: 30x13 x 2.6m (draft)
Displacement:	578.026 LIGHTSHIP
GRT:	341
IMO number:	9778442
Call sign:	2IMW5
Port of Registry:	Glasgow

## TANK CAPACITIES

Fuel oil:	208m <sup>3</sup>
Fresh water:	53.5m <sup>3</sup>
Lube oil:	2.8m <sup>3</sup>
Fresh water trim:	84.5m <sup>3</sup>

## PERFORMANCE

Bollard pull:	37.8t
Speed:	10.8 knots

## PROPULSION

Main engines:	3 x Caterpillar C32ACERT
Total power:	2124KW(2886HP)
Propellers:	3 x 1700mm 4 blade fixed pitch in nozzles
Bow thruster:	268 hp, hydraulic

## AUXILIARY EQUIPMENT

Main generator sets:	2 x Caterpillar C 04.4
Capacity:	107.5kVA, 50Hz, 230/400V
Fuel oil separator:	GEA Westfalia, OTC-2
Fuel transfer pump:	50m <sup>3</sup> /hr
Water transfer pump:	50m <sup>3</sup> /hr

## DECK

Hyd power pack:	Caterpillar C32 Acert
Deck cranes:	2 x Heila HLRM 340/18-sk
Capacity:	33ton @ 9metres - 13.5tonnes @18.5metres
Deck winch:	Ridderinkhof
AH winch:	150 tonne @ 5m/min pull or 30ton@32metres per minute, wire capacity 900metres of 36mm or 200m of 54mm wire
Towing winch:	40 ton@12m a minute 600metres of 36mm wire
Tugger winch:	2 x dromec 12ton@4m per minute
Bow roller:	6 metres x 1.2metre dia
Stern roller:	3 metres x 1.2 metre dia
Anchor handling pins:	WK HYD flipper type with cam fork

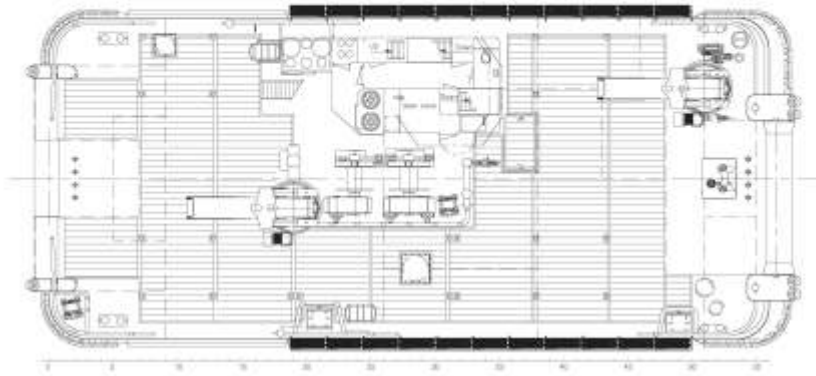
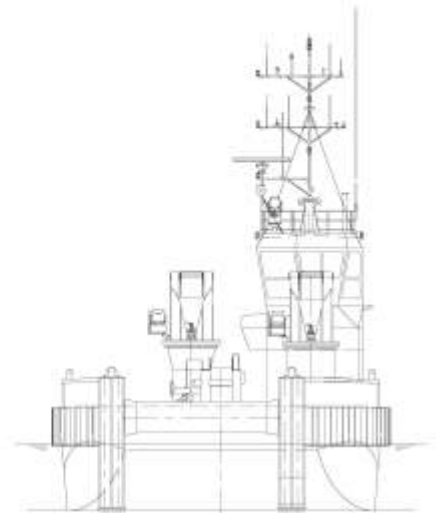
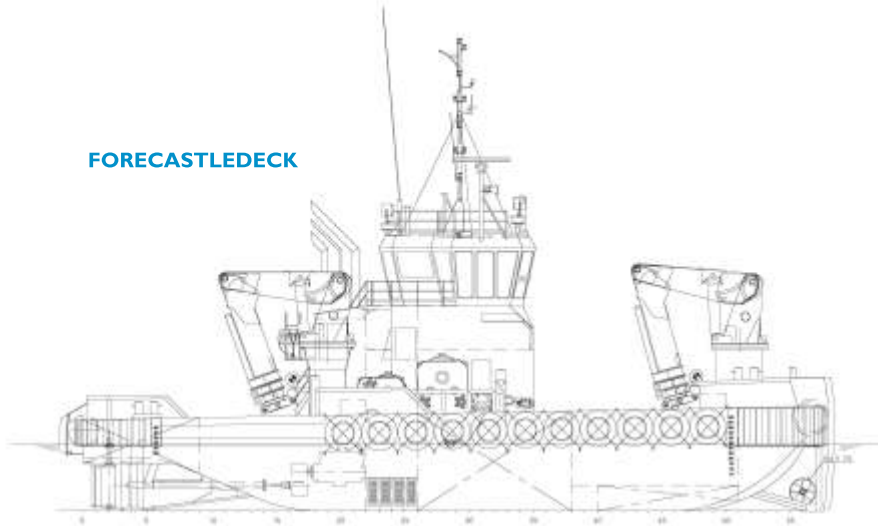
## ACCOMMODATION

Heated and air-conditioned living spaces for seven persons, consisting of three single cabins, two double cabins, a galley/mess and sanitary facilities consisting of three shower rooms and four wc.

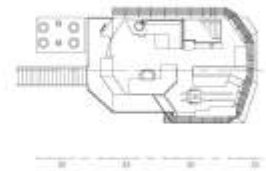
## NAVIGATION EQUIPMENT

Searchlight:	2 x Pesch 2000W
Magnetic compass:	Cassens & Plat Reflecta I
Gyro compass:	Anschuetz, Standard 22 Compact
RADAR:	Furuno FAR 2117
Autopilot:	Seapilot 75
AIS:	Furuno FA-I50
VHF/DSC:	2 x Sailor RT-5022
Handheld VHF:	2 x Jorton TR-20
SSB:	Furuno FS1570
Inmart C:	Thrane and Thrane Sailor 6110
Fleet broadband:	Sailor I50
Chart system:	Max sea
Entertainment system:	Intellian i6
Speed log:	Furuno DS-80
AIS:	Furuno FA-I50

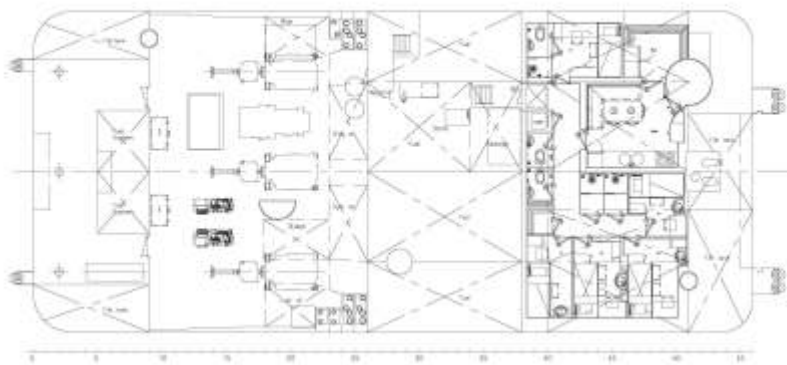
**FORECASTLEDECK**



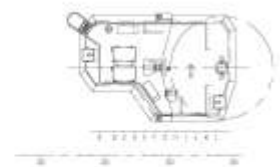
**MAINDECK**



**TOPDECK**



**BELOW MAINDECK**



# MCS Ely II



Maritime House  
69-71 Main Road, Fairlie  
North Ayrshire, Scotland, KA29 0AD

T +44 (0)1475 568838  
E [menno@maritimecraft.co.uk](mailto:menno@maritimecraft.co.uk)  
[www.maritimecraft.co.uk](http://www.maritimecraft.co.uk)