



# MCS Levanto

## GENERAL

Type:	Damen Fast Crew Supplier 2610
Built:	2013
Class:	Bureau Veritas I <sup>®</sup> Hull
Flag:	Panama
Dimensions:	25.75m x 10.4m x 2.2m (draft)
Displacement:	90 tonnes (50% consumables)
IMO:	9679086
Call sign:	HO7175
Port of registry:	Panama

## TANK CAPACITIES

Fuel oil:	22.5m <sup>3</sup>
Fresh water:	3m <sup>3</sup>
Dirty oil:	0.34m <sup>3</sup>
Sewage:	0.5m <sup>3</sup>

## PERFORMANCE

Sprint speed:	24 knots	Speeds may be slower in summer months due to high sea and air temperature.
Cruising speed:	22 knots	

## PROPULSION

Main engines:	2 x Caterpillar C32 TTA
Total power:	1800 bkW (2410 bhp) at 2000 rpm
Gearbox:	Reintjes VVVS 440/I (two speed)
Propellers:	Fixed-pitch propellers
Bow thruster:	2 x 50 kW

## AUXILIARY EQUIPMENT

Main generator set:	2 x Caterpillar C2.2T
Capacity:	2 x 28 kVA, 50 Hz, 230/400V
Fuel oil separator:	Separ SWK 2000

## DECK

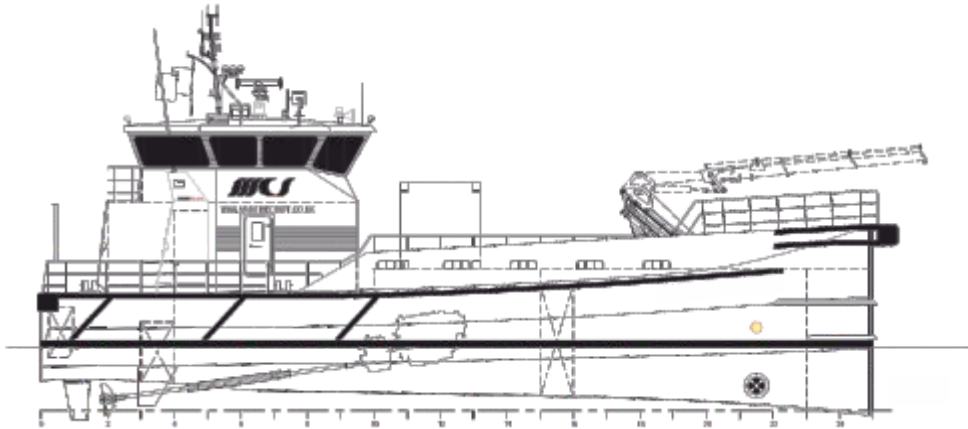
Deck crane:	Not currently fitted onboard
Moonpool:	1200mm x 920mm
Deck carrying capacity:	15 tonnes, 1.5 t/m <sup>2</sup>
Clear deck space:	90m <sup>2</sup>
Hydraulic bow ramp:	Height adjustable transfers, 1m - 4m

## ACCOMMODATION

50 pax.  
 Heated and air conditioned passenger saloon.  
 Galley area with all amenities and a heads compartment with shower.  
 Crew sleeping accommodation for five in three cabins.

## NAVIGATION EQUIPMENT

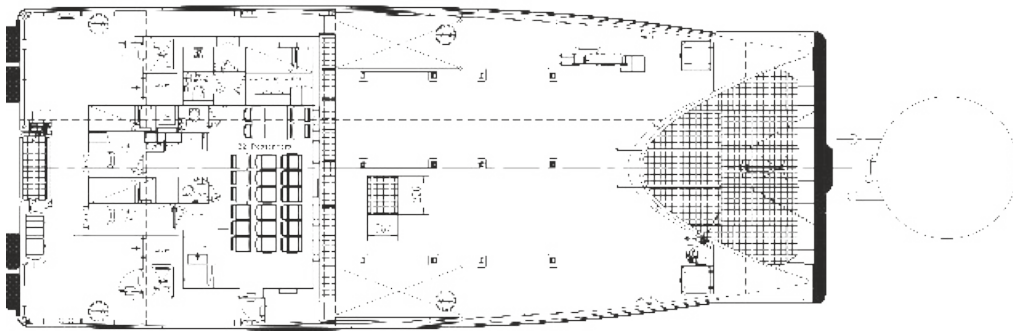
Searchlight:	2 x Seematz 1000W
Magnetic compass:	Alphatron
Satellite compass:	JRC JRL-2I
Radar system:	2 x JRC JMA mk2
GPS:	JRC JLR-2I
Autopilot:	Navis
AIS:	JRC
Echosounder:	JRC JFE-380
VHF/DSC:	Thrane & Thrane Sailor
Handheld VHF:	Thrane & Thrane Sailor
SSB:	Thrane & Thrane Sailor
DSC:	Thrane & Thrane Sailor
Navtex:	JRC NCR-333



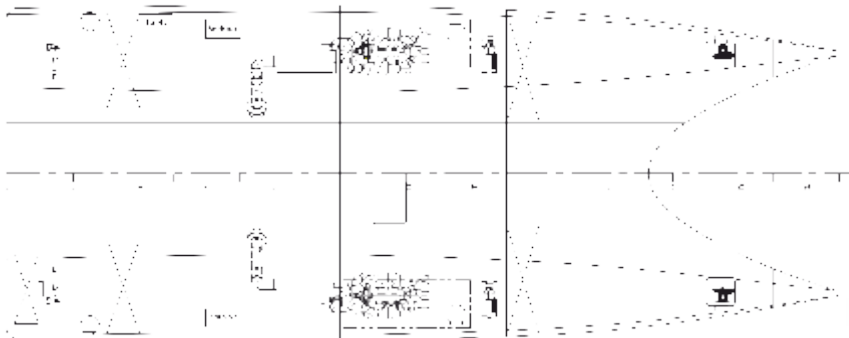
PROFILE



BRIDGE-DECK



MAINDECK



BELOW MAINDECK

# MCS Levanto