



MCS SWATH 2

GENERAL

Type:	Typhoon Class SWATH		
Built:	2019		
Class:	Lloyds ⚓ 100 A1 MCA Category I, HSC		
Flag:	UK		
Dimensions:	26m x 10.8m x 2.3m (draft)		
Displacement:	132t		
Gross tonnage:	105		
IMO:	9879090		
Call sign:	MEYL5		
Port of registry:	Glasgow		

TANK CAPACITIES

Fuel oil:	22m ³	Ballast:	4m ³
Fresh water:	1.5m ³	Bilge/Black Water:	0.36m ³
Dirty oil:	0.196m ³	Lube Oil:	0.2m ³
Sewage:	0.5m ³	Hydraulic Oil (total):	0.7m ³

PERFORMANCE

Sprint speed:	23 knots
Cruising speed:	21 knots

PROPULSION

Main engines:	4 x Scania D116-076M
Total power:	4 x 662kW
Gearbox:	Hundested
Propellers:	Hundested CPP
Bow thruster:	2 x 90 kW

AUXILIARY EQUIPMENT

Main generator set:	2 x Cummins MDKDU
Capacity:	2 x 27kW 230/400V 50Hz
Stabilisers:	4 Fins - Island Engineering
Ballast System:	Servowatch

DECK

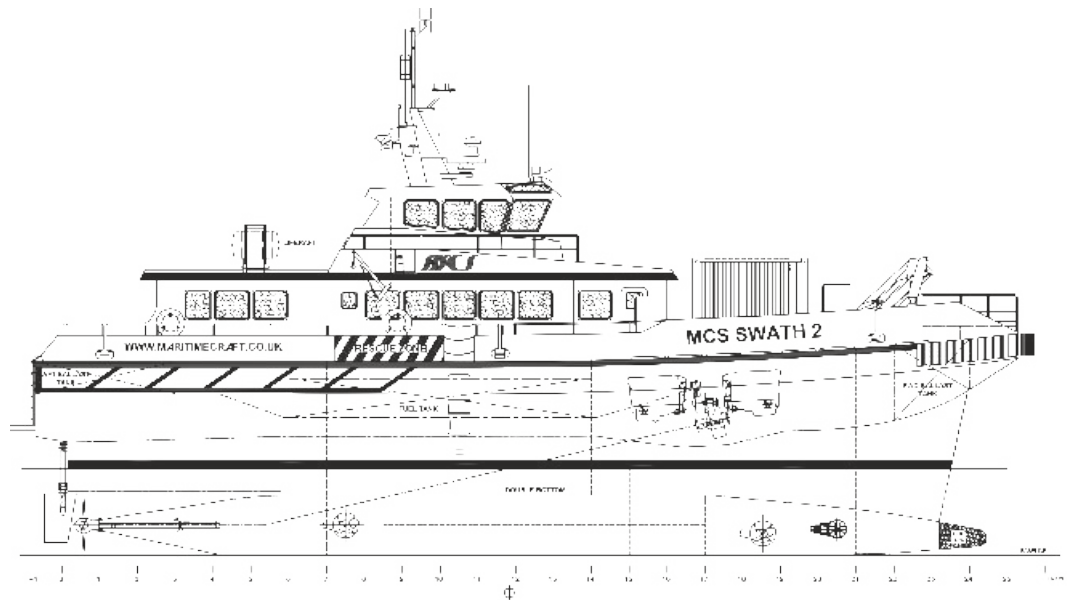
Deck crane:	Palfinger PK6500
Capacity:	610kg at 7.5m
Deck carrying capacity:	10t
Clear deck space:	95m ²
Fixing points for 2 x 10ft ISO Container	

ACCOMMODATION

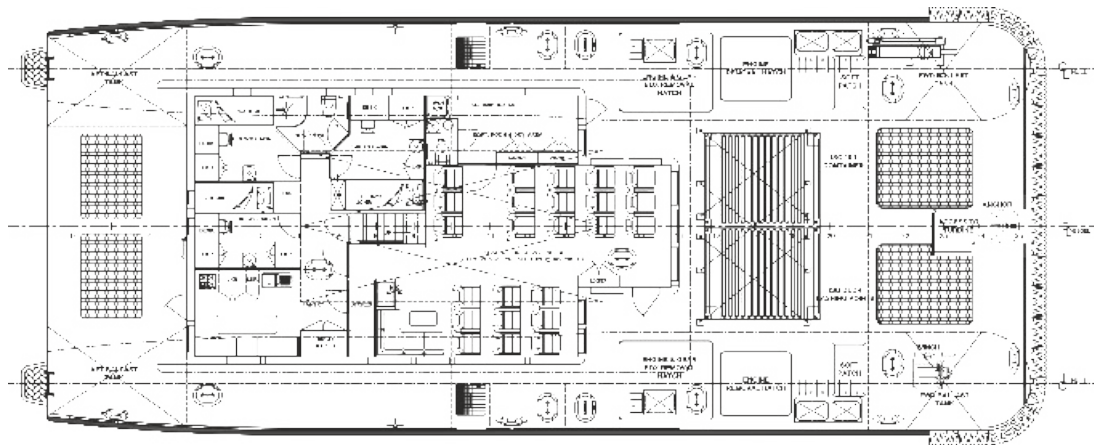
Heated and air conditioned passenger saloon with suspension seats for 24 PAX with work tables and UK & Euro 230V socket outlets. Pantry area with amenities, shower and toilets. Maximum six crew.

NAVIGATION EQUIPMENT

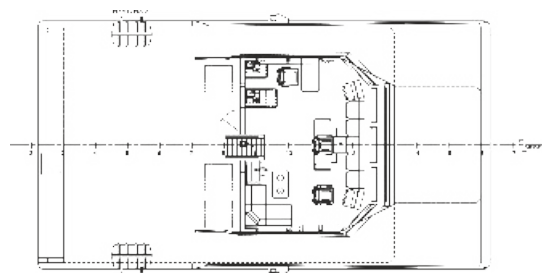
Searchlight:	2 x Colorlight LED
Magnetic compass:	Sestrel Major Binnacle
Satellite compass:	Furuno SC50
Gyro Compass	Furuno GC80
GPS	Furuno GPI50
Radar system:	2 x Furuno 2117BB
ECDIS	Furuno FMD3100
Autopilot:	Navitron NT888G
AIS:	Furuno FA 150
Echosounder:	Furuno FE700
VHF/DSC:	2 x Sailor 6222
Handheld VHF:	Jotron TR20
SSB:	Sailor 6310
Navtex:	Furuno NX700B



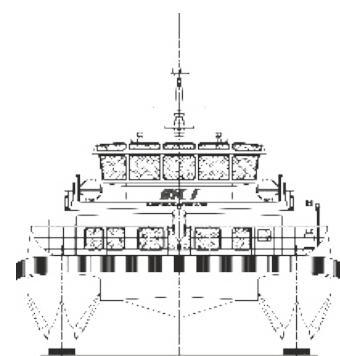
PROFILE



MAINDECK



BRIDGE-DECK



BOW PROFILE

MCS SWATH 2



Maritime House
69-71 Main Road, Fairlie
North Ayrshire, Scotland, KA29 0AD

T +44 (0)1475 568838
E menno@maritimecraft.co.uk
www.maritimecraft.co.uk