



MCS Boreas

GENERAL

Type:	Damen Fast Crew Supplier 2610
Built:	2013
Class:	Bureau Veritas I [✉] Hull MCA Category I
Flag:	UK
Dimensions:	25.75m x 10.4m x 2.2m (draft)
Displacement:	90 tonnes (50% consumables)
IMO:	9679098
Call sign:	2GDR8
Port of registry:	Glasgow

TANK CAPACITIES

Fuel oil:	22.5m ³
Fresh water:	2m ³
Dirty oil:	0.34m ³
Sewage:	0.5m ³

PERFORMANCE

Sprint speed:	26 knots
Cruising speed:	22 knots

PROPULSION

Main engines:	2 x Caterpillar C32 TTA
Total power:	1800 bkW (2410 bhp) at 2000 rpm
Gearbox:	Reintjes VVVVS 440/I (two speed)
Propellers:	Fixed-pitch propellers
Bow thruster:	2 x 50 kW

AUXILIARY EQUIPMENT

Main generator set:	2 x Caterpillar C2.2T
Capacity:	2 x 28 kVA, 50 Hz, 230/400V
Fuel oil separator:	Separ SWK 2000

DECK

Deck crane:	Heila HLM 20-2s Capacity 2.2 tonnes @ 8.5m
Moonpool:	1200mm x 920mm
Deck carrying capacity:	15 tonnes, 1.5 t/m ²
Clear deck space:	90m ²

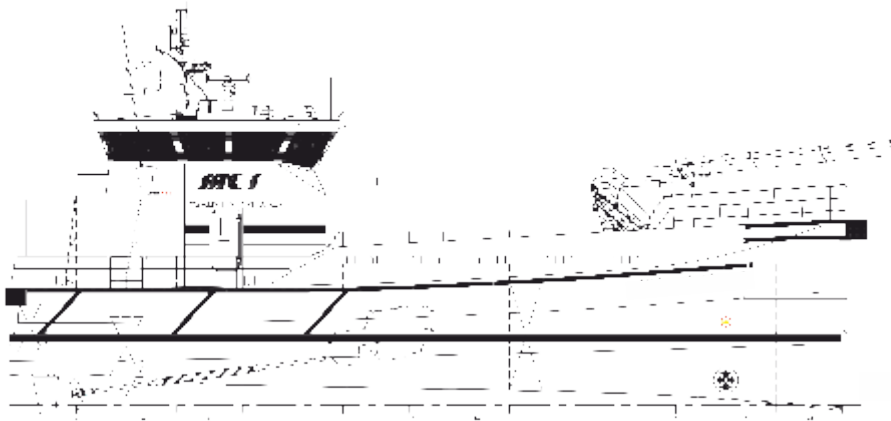
ACCOMMODATION

Heated and air conditioned passenger saloon with suspension seats for 12 persons complete with work tables and UK & Euro 230V socket outlets. Galley area with all amenities and a heads compartment with shower.

Crew sleeping accommodation in 3 x twin cabins.

NAVIGATION EQUIPMENT

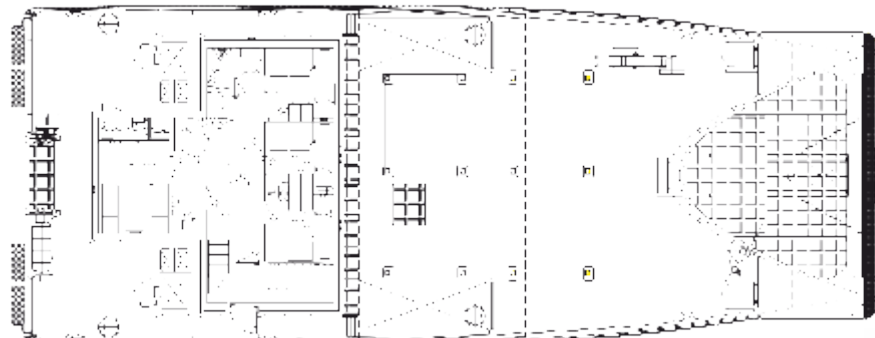
Searchlight:	2 x Seematz 1000W
Magnetic compass:	Lilley & Gillie
Satellite compass:	JRC JRL-21
Radar system:	2 x JRC JMA mk2
GPS:	JRC JLR-21
Autopilot:	Alphatron Seapilot MFC
ALS:	JRC
Echosounder:	JRC JFE-380
VHF/DSC:	Thrane & Thrane Sailor
Handheld VHF:	Thrane & Thrane Sailor
SSB:	Thrane & Thrane Sailor
DSC:	Thrane & Thrane Sailor
Navtex:	JRC NCR-333



PROFILE

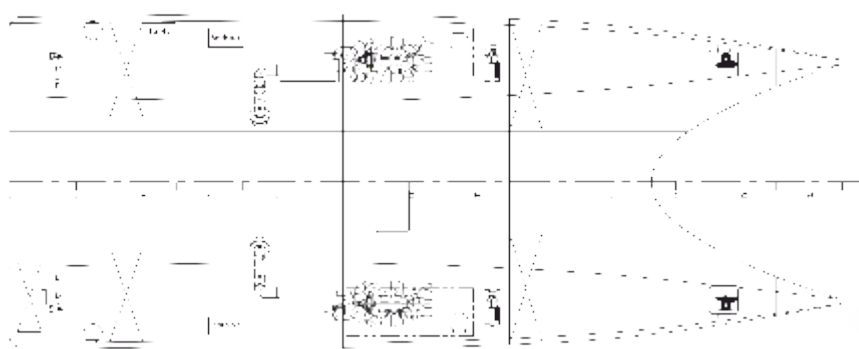


BRIDGE-DECK



FENDER NOT TO SCALE

MAINDECK



BELOW MAINDECK

MCS Boreas



Maritime House
69-71 Main Road, Fairlie
North Ayrshire, Scotland, KA29 0AD

T +44 (0)1475 568838
E menno@maritimecraft.co.uk
www.maritimecraft.co.uk