



# MCS Gemma

## GENERAL

Type:	Damen Multicat 2611		
Built:	May 2011		
Class:	Bureau Veritas I ✕ Hull	Unrestricted Navigation	
Flag:	UK MCA Category I		
Dimensions:	26m x 11.5m x 2.6m (draft)		
Displacement:	515t (50% consumables)		
IMO number:	9585182		
Call sign:	2EJC4		
Port of registry:	Glasgow		

## TANK CAPACITIES

Fuel oil:	119m <sup>3</sup>	Dirty oil:	2m <sup>3</sup>
Fresh water:	49m <sup>3</sup>	Bilge water:	1.8m <sup>3</sup>
Lube oil:	1.8m <sup>3</sup>	Sewage:	9.2m <sup>3</sup>

## PERFORMANCE

Bollard pull:	33t
Speed:	9.7 knots

## PROPULSION

Main engines:	3 x Caterpillar 3412 D6TA
Total power:	1791 bkw (2400 bhp) at 1800rpm
Propellers:	3 x 1700mm 4 blade fixed pitch in nozzles
Bowthruster:	268 hp, hydraulic

## AUXILIARY EQUIPMENT

Main generator sets:	2 x Caterpillar C 04.4
Capacity:	107.5kVA, 50Hz, 230/400 V
Fuel oil separator:	GEA Westfalia, OTC-2
Fuel transfer pump:	50m <sup>3</sup> /hour
Water transfer pump:	50m <sup>3</sup> /hour

## DECK

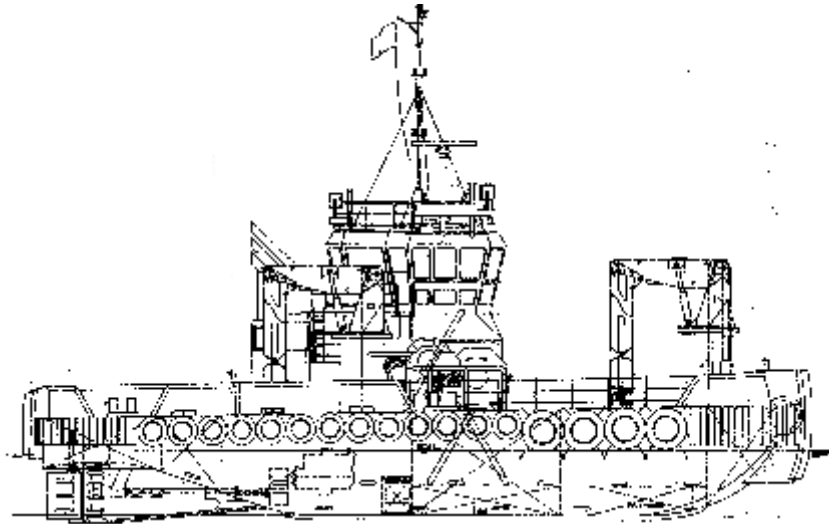
Deck cranes:	2 x Heila HLRM 230-4SL
Capacity:	24.4t at 7.89m, 10.3t at 16.5m
Deck winch:	Ridderinkhof double drum waterfall winch
AH winch:	100t @ 5m/min pull
Towing winch:	50t @ 10m/min pull
Capstan:	5000kg @ 30m/min
Bow roller:	5.46m x 1016mm dia
Stern roller:	1.97m x 762mm dia

## ACCOMMODATION

Heated and air-conditioned living spaces for 6 persons, consisting of three double cabins, a galley/mess and sanitary facilities.

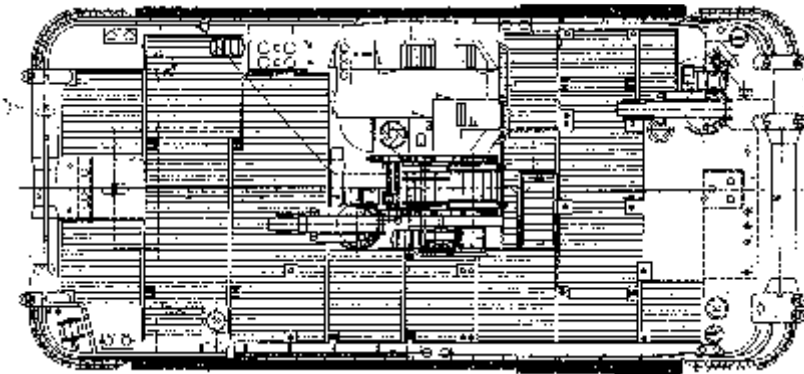
## NAVIGATION EQUIPMENT

Searchlight:	2 x Pesch 2000W
Magnetic compass:	Cassens & Plat Reflecta I
Gyro compass:	Anschuetz, Standard 22 Compact
RADAR:	Furuno FAR 2117
Autopilot:	Seapilot 75
AIS:	Furuno FA-I50
VHF/DSC:	2 x Sailor RT-5022
Handheld VHF:	2 x JorttR-20
SSB:	Furuno FS1570
Inmart C:	SailortF-3000E

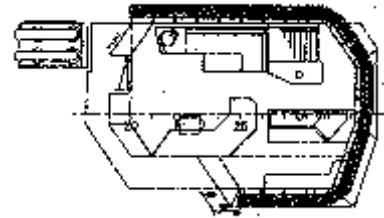


PROFILE

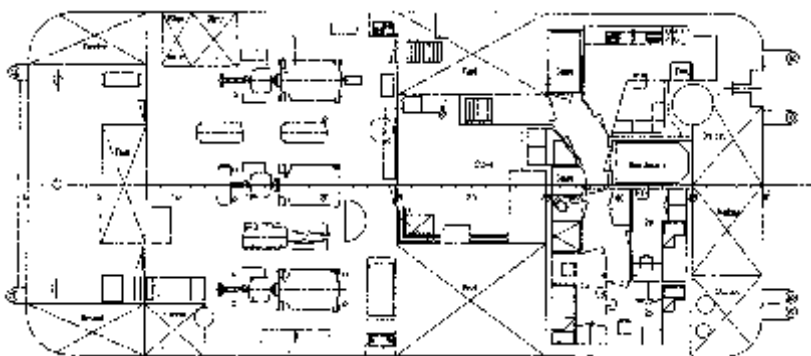
MAINDECK



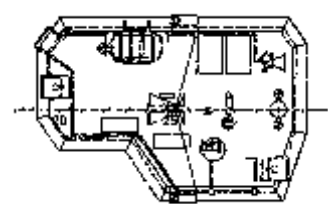
BRIDGE-DECK



BELOW MAINDECK



TOPDECK



# MCS Gemma



Maritime House  
69-71 Main Road, Fairlie  
North Ayrshire, Scotland, KA29 0AD

T +44 (0)1475 568838  
E [menno@maritimecraft.co.uk](mailto:menno@maritimecraft.co.uk)  
[www.maritimecraft.co.uk](http://www.maritimecraft.co.uk)