



MCS Rosie 2

GENERAL

Type:	Multi Cat 2712
Built:	2023
Class:	Bureau Veritas I ✕ Hull · MACH
Flag:	UK
Dimensions:	27.27m x 12.45m x 2.85m (draft)
IMO number:	9909558
Call sign:	MOOK5
Port of Registry:	Glasgow

TANK CAPACITIES

Fuel oil:	109.4m ³	Dirty oil:	1.7m ³
Fresh water:	81.7m ³	Bilge water:	4.1m ³
Lube oil:	1.5m ³	Sewage:	10.5m ³
Hydraulic oil:	2.3m ³		

PERFORMANCE

Bollard pull:	32t
Speed:	10 knots

PROPULSION

Main engines:	2 x Cat C32 TTA ACERT - B-Rating
Total power:	1790 bkw at 1800 rpm
Gear boxes:	2 x Reintjes WAF 572L 7,091 : 1
Propulsion:	2 x Promarin fixed pitch propellers
Bowthruster:	250 hp, hydraulic

AUXILIARY EQUIPMENT

Generator sets:	2 x Caterpillar C04.4, 86 ekW, 107 kVA each, 50 Hz
Hydraulic set:	Caterpillar C12
Fuel oil separator:	1 x Facet MV-II-AG
Fuel transfer pump:	50m ³
Water transfer pump:	50m ³

DECK

Deck cranes:	2 x HS Marine LHE3, 11.3t @ 16.5m / 25.1t @ 8.3m 1 x 5t crane winch
AH winch:	100t @ 10m/min pull
Towing winch:	50t @ 10m/min
Towing pins fwd:	DMC double pin with chain stopper
Bow roller:	1000mm @ 130t SWL
Stern roller:	750mm @ 110t SWL
Tugger winch:	12t @ 5-20m/min

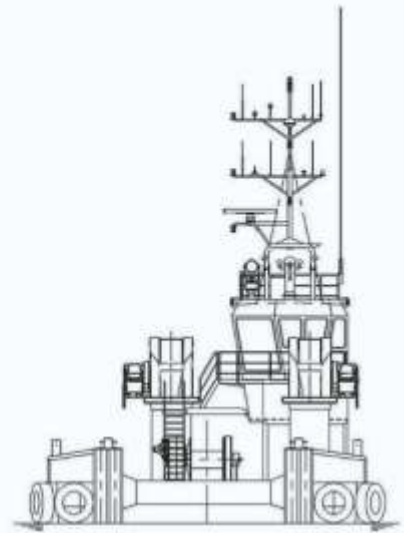
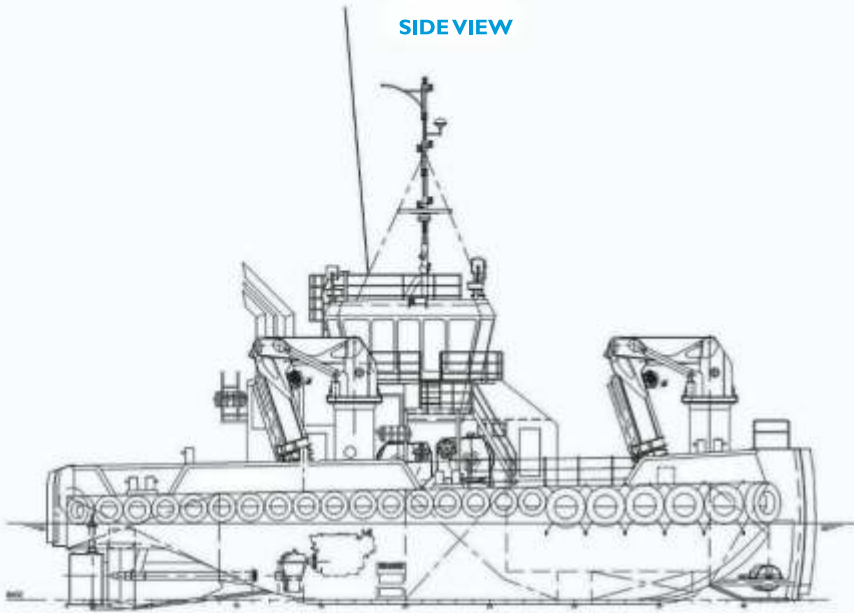
ACCOMMODATION

Heated and air-conditioned living spaces for 10 persons, consisting of five twin cabins, a combined galley and mess and sanitary facilities.

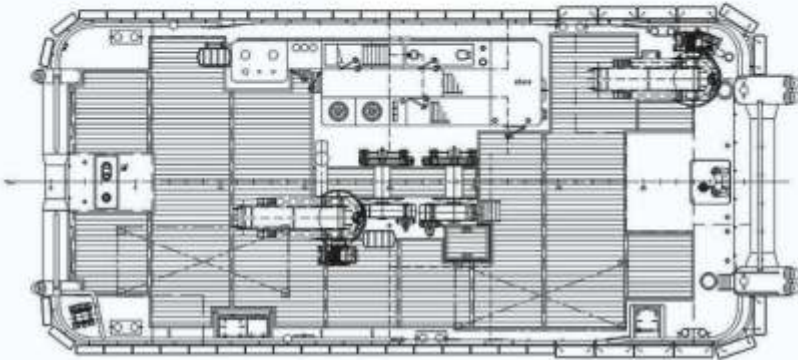
NAVIGATION EQUIPMENT

Searchlight:	2 x Pesch, 2000W
Magnetic compass:	1 x Cassens & Plat, Reflecta I
RADAR:	1 x Furuno, FAR-I518BB
Autopilot:	1 x Simrad, AP-70
AIS:	1 x Furuno, FA-I70
GPS:	1 x Furuno, GP-I70
VHF/DSC:	2 x Cobham, RT7222
Handheld VHF:	2 x Jotron, TR-30
Inmarsat C:	2 x Cobham, Sailor 6110
Sat Comms:	Starlink
Speed log:	1 x Skipper, EML-224

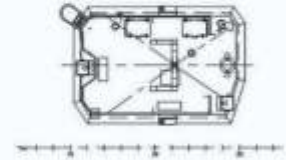
SIDE VIEW



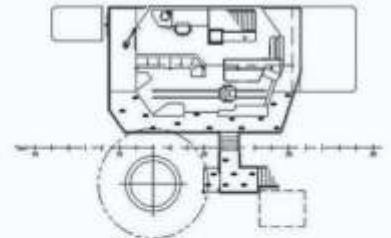
MAINDECK



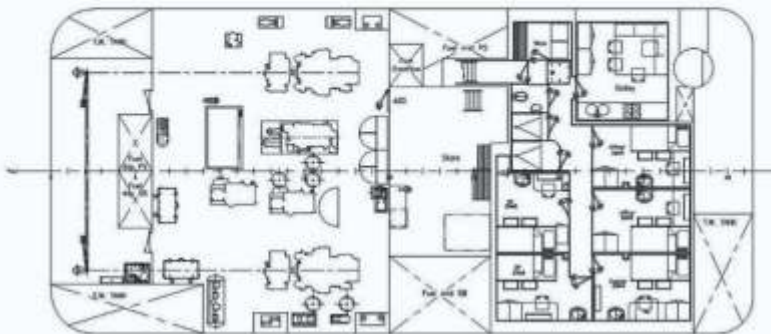
TOPDECK



WHEELHOUSE DECK



BELOW MAINDECK



MCS Rosie 2