



# MCS ELLY II

## GENERAL

Type:	Damen Multicat 3013
Built:	May 2015
Class:	Bureau Veritas I ✕ Hull Unrestricted Navigation
Flag:	UK
Dimensions:	30m x 13m x 2.6m (draft)
Displacement:	978t
IMO number:	9778442
Call sign:	2IMW5
Port of Registry:	Glasgow

## TANK CAPACITIES

Fuel oil:	208m <sup>3</sup>
Fresh water:	53.5m <sup>3</sup>
Lube oil:	2.8m <sup>3</sup>
Fresh watertrim:	84.5m <sup>3</sup>

## PERFORMANCE

Bollard pull:	37.8t
Speed:	10.8 knots

## PROPULSION

Main engines:	3 x Caterpillar C32ACERT
Total power:	2124KW(2886HP)
Propellers:	3 x 1700mm 4 blade fixed pitch in nozzles
Bowthruster:	268 hp, hydraulic

## AUXILIARY EQUIPMENT

Main generator sets:	2 x Caterpillar C 04.4
Capacity:	107.5kVA, 50Hz, 230/400 V
Fuel oil separator:	GEA Westfalia, OTC-2
Fueltransfer pump:	50m <sup>3</sup> /hr
Watertransfer pump:	50m <sup>3</sup> /hr

## DECK

Hyd power pack:	Caterpillar C32 Acert
Deck cranes:	2 x Heila HLRM 340/18-sk
Capacity:	33t @ 9m - 13.5t @ 18.5m
Deck winch:	Ridderinkhof
AH winch:	150t @ 5m/min pull or 30t @ 32m per minute, wire capacity 900m of 36mm
Towing winch:	40t @ 12m a minute 600m of 36mm wire
Tugger winch:	2 x dromec 12t @ 4m per minute
Bow roller:	6m x 1.2m dia
Stern roller:	3m x 1.2m dia
Anchor handling pins:	WK HYD flippertype with Karm fork

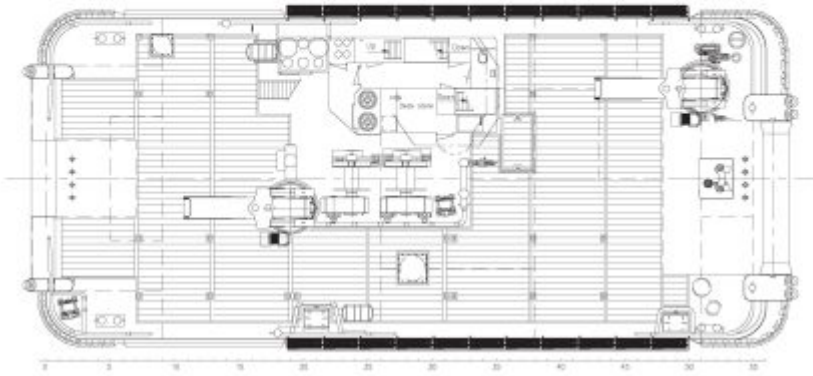
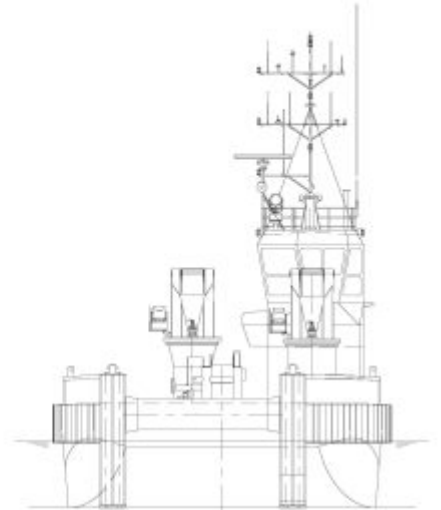
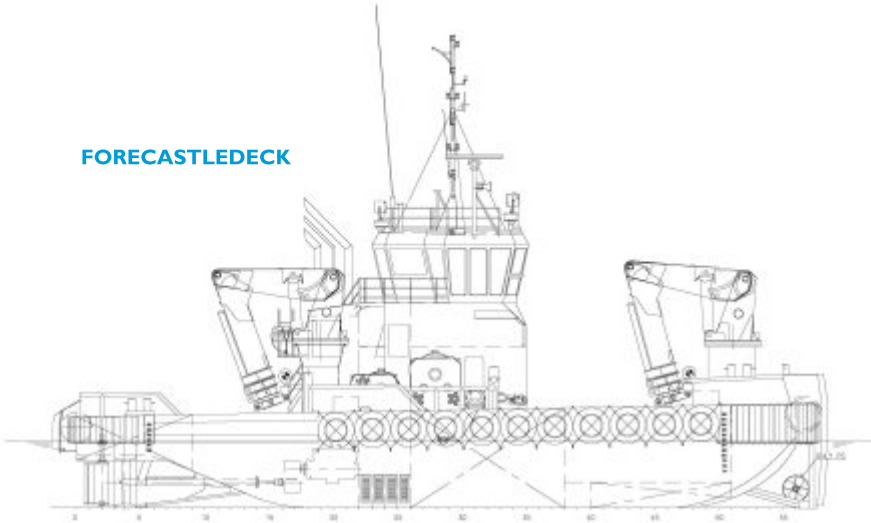
## ACCOMMODATION

Heated and air-conditioned living spaces for seven persons, consisting of three single cabins, two double cabins, a galley/mess and sanitary facilities consisting of three shower rooms and four wc.

## NAVIGATION EQUIPMENT

Searchlight:	2 x Pesch 2000W
Magnetic compass:	Cassens & Plat Reflecta I
Gyro compass:	Anschuetz, Standard 22 Compact
RADAR:	Furuno FAR 2117
Autopilot:	Seapilot 75
AIS:	Furuno FA-I50
VHF/DSC:	2 x Sailor RT-5022
Handheld VHF:	2 x JorttR-20
SSB:	Furuno FSI570
Inmart C:	Thrane andthrane Sailor 6110
Fleet broadband:	Sailor I50
Chart system:	Max sea
Entertainment system:	Intellian i6
Speed log:	Furuno DS-80
AIS:	Furuno FA-I50

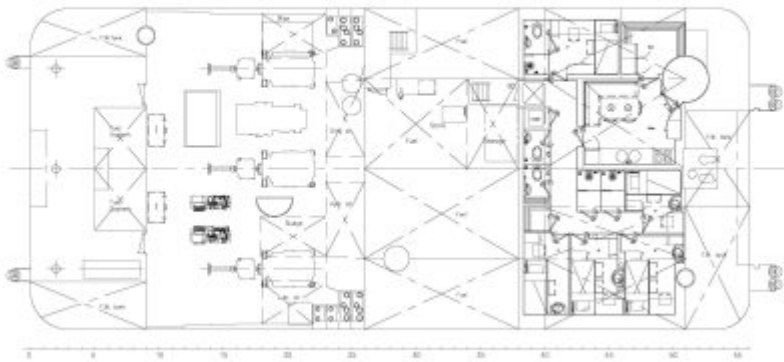
**FORECASTLEDECK**



**MAINDECK**



**TOPDECK**



**BELOW MAINDECK**



# MCS Ely II



Maritime House  
69-71 Main Road, Fairlie  
North Ayrshire, Scotland, KA29 0AD

T +44 (0)1475 568838  
E [menno@maritimecraft.co.uk](mailto:menno@maritimecraft.co.uk)  
[www.maritimecraft.co.uk](http://www.maritimecraft.co.uk)