



MCS Anneke 2

GENERAL

Type:	Neptune Eurocarrier 2611
Built:	January 2013
Class:	MCA Cat 1
	Up to 150 miles (from safe haven)
Flag:	UK
Dimensions:	26.48m x 11m x 2.61m (draft)
IMO number:	9675963
Call sign:	MBAH3
Port of Registry:	Glasgow

TANK CAPACITIES

Fuel oil:	106m ³
Fresh water:	43m ³
Lube oil:	5.7m ³
Hydraulic oil:	1.9m ³
Dirty oil:	2m ³
Gearbox oil:	1.9m ³
Bilge water:	8m ³
Ballast:	34m ³
Sewage:	4m ³

PERFORMANCE

Bollard pull:	35.6t
Speed:	10 knots

PROPULSION

Main engines:	2 x Cummins QSK38-M
Total power:	2 x 1400 bhp at 1800 rpm
Gear boxes:	Reintjes WAF 364L 4.92:1
Propulsion:	2 x FP 1630mm

AUXILIARY EQUIPMENT

Generator sets:	Caterpillar C9, 2 x 200kW, 250 kVA
Fuel oil separator:	Westfalia 1740, L/H, OTC-3-02-137

DECK

Deck cranes:	FWD Heila HLRM 230-4SL, fixed hook SWL 10.3te at 16.5 winch SWL
	AFT Heila HLRM 140-3S, fixed hook SWL 10te at 12.17m winch SWL
Winches:	1 x anchor handling winch 100t 1 x towing winch 50t 4 x tugger winches 15t
Towing hook:	1 x Mampaey 30te SWL
Towing pins:	2 x hydraulic + wire catcher
Anchor:	2 x 265kgs
Chain:	110m x 17.5mm
Anchor winch:	1 x 17.5mm hydraulic heeling motor: 140bar-60 ltr/min
Bow roller:	6m

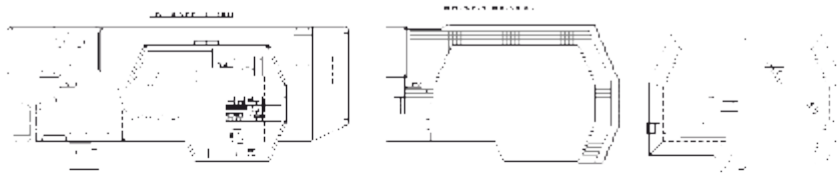
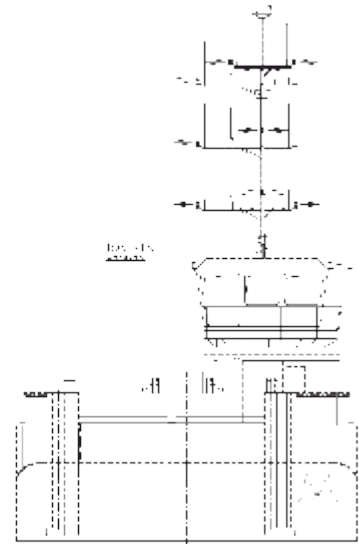
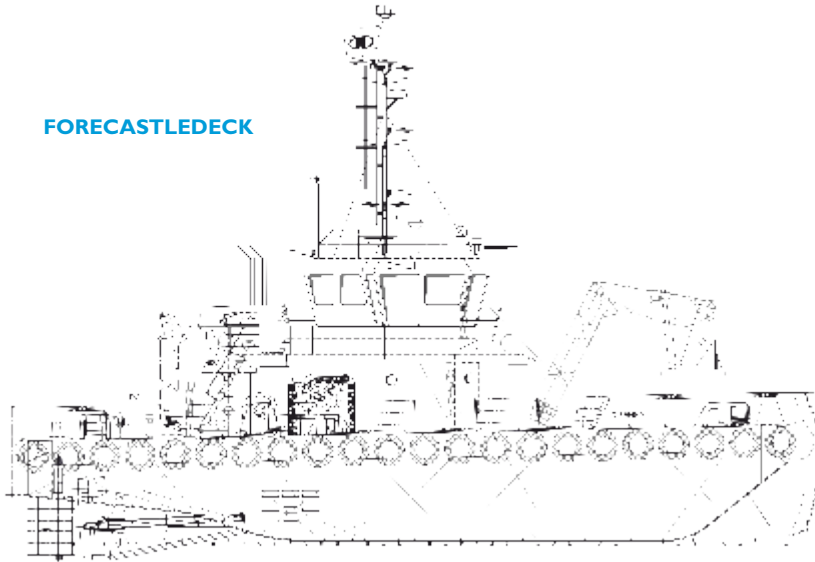
ACCOMMODATION

Heated and air-conditioned living spaces for 10 persons, consisting of five double crew cabins, a galley and mess and sanitary facilities.

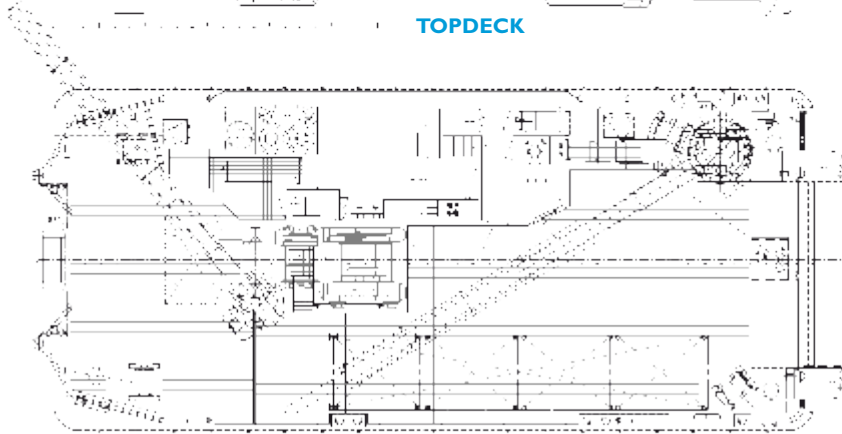
NAVIGATION EQUIPMENT

Searchlight:	1 x 2000W
Magnetic compass:	Cassens & Plath
Satellite compass:	JRC
RADAR:	JRC
Autopilot:	Alpha Seapilot
AIS:	JRC
DGPS:	JRC
VHF/DSC:	2 x Sailor
Handheld VHF:	2 x Sailor
Inmarsat C:	Sailor
Sat Comms:	Starlink System
Chart system:	Maxsea Timezero
Speed log:	JRC

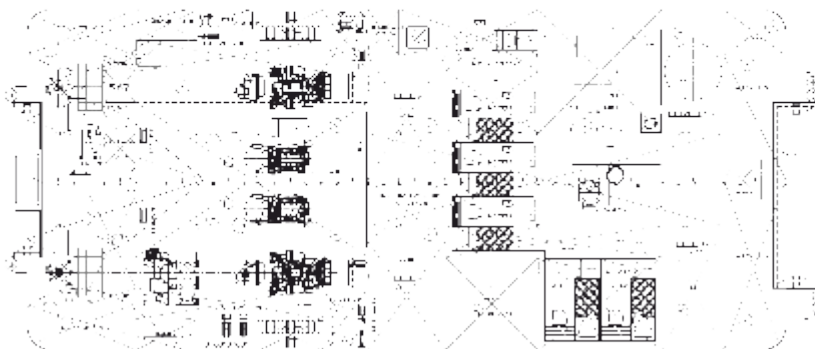
FORECASTLEDECK



TOPDECK



MAINDECK



BELOW MAINDECK

MCS Anneke 2



Maritime House
69-71 Main Road, Fairlie
North Ayrshire, Scotland, KA29 0AD

T +44 (0)1475 568838
E menno@maritimecraft.co.uk
www.maritimecraft.co.uk