



MCS Lenie

GENERAL

Type:	Damen Shoalbuster 2709
Built:	November 2008
Class:	Bureau Veritas I 3/3 ✕ HULL Unrestricted navigation
Flag:	UK
Dimensions	27.02m x 9.1m x 2.7m (draft)
Displacement:	370t (50% consumables)
IMO number:	9522221
Call sign:	2BON3
Port of Registry:	Glasgow

TANK CAPACITIES

Fuel oil:	122m ³	Dirty oil:	4.3m ³
Fresh water:	30.1m ³	Bilge water:	4.3m ³
Lube oil:	3.9m ³	Sewage:	2.2m ³
Hydraulic oil:	1.6m ³		

PERFORMANCE

Bollard pull:	39.5t
Speed:	11.6 knots

PROPULSION

Main engines:	2 x Caterpillar 3512BtA/A
Total power:	2238 bkW (3000 bhp) at 1600 rpm
Propellers:	2 x 2100 mm Promarin fixed pitch in 'Optima' nozzles
Bowthruster:	200 bhp, hydraulic

AUXILIARY EQUIPMENT

Main generator sets:	2 x Caterpillar C-4.4tA
Capacity:	2 x 86.3 kVA, 50 Hz, 230/ 400V
Hydraulic set:	1 x Caterpillar C-09tA
Fuel oil separator:	Alfa Laval MIB 303
Fuel + water transfer pump:	Sterling SIHI 32m ³ /hr @1.5 Bar
Freshwater maker:	HEM 25/ 1300, 5m ³ /hr

DECK

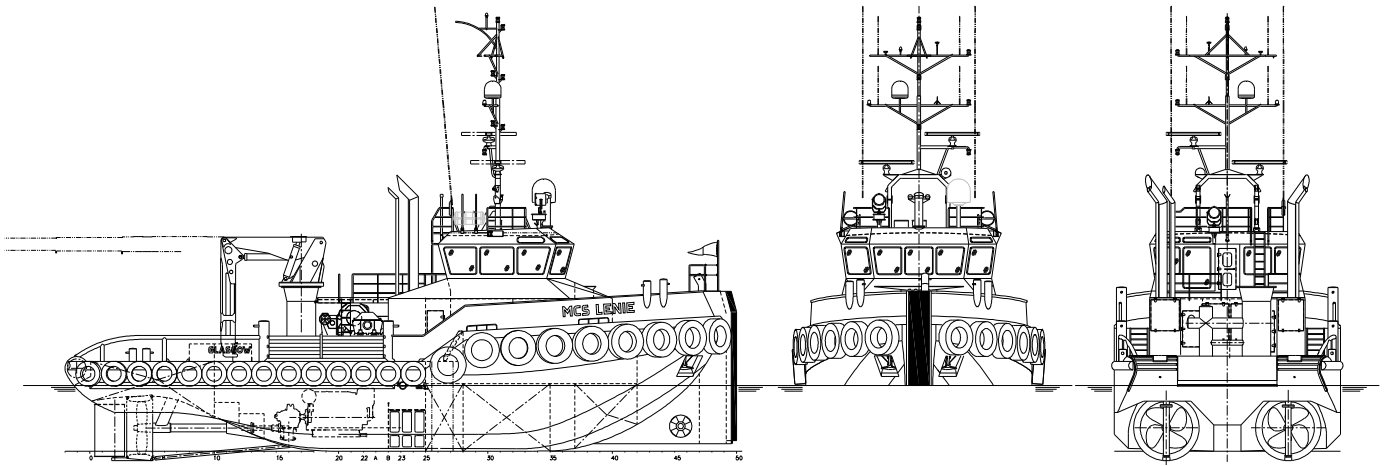
Deck crane:	Heila HLRM 140-4SL
Capacity:	14.6t @ 7.6m, 5.1t @ 18m
Deck winch:	Ridderinkhof, double drum waterfall winch
Anchor handling:	100t @ 2.5m/min pull
Towing:	64t @ 4.0 m/min pull
Tugger winch:	8t @ 9m/min
Moonpool:	850 x 650 mm
Capstan:	WK Hydraulics, 2t @ 10m/min
Deck carrying capacity:	50t
Clear deck space:	68m ²
Stern roller:	4m x 750mm dia

ACCOMMODATION

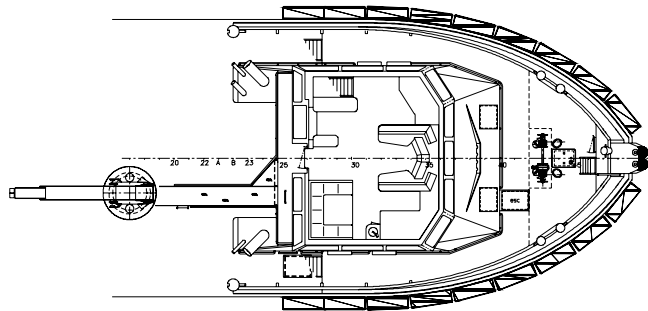
Heated and air-conditioned living spaces for seven persons, consisting of three single crew cabins and two double crew cabins, a galley/mess and sanitary facilities with two toilets.

NAVIGATION EQUIPMENT

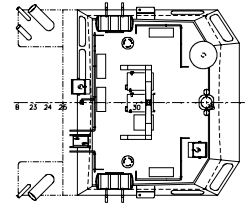
Searchlights:	2 x Seematz 1000W
Magnetic compass:	Cassens & Plath Reflecta I
Gyro compass:	Ratheon Standard 22
RADAR system:	2 x Furuno FAR-2117
GPS:	Furuno GP-150D
Autopilot:	Radio Zeeland Seapilot 75
AIS:	Furuno FA 150
Echosounder:	Furuno FE-700
VHF/DSC:	3 x Sailor RT5022 with DSC
Handheld VHF:	2 x JotrontRT20
SSB/DSC:	SP-radiotype 5000
Navtex:	Furuno NX 700
Inmarsat C:	Sailor H2095 C
Inmarsat F:	Nero F77
SatellitetV:	KVF M7



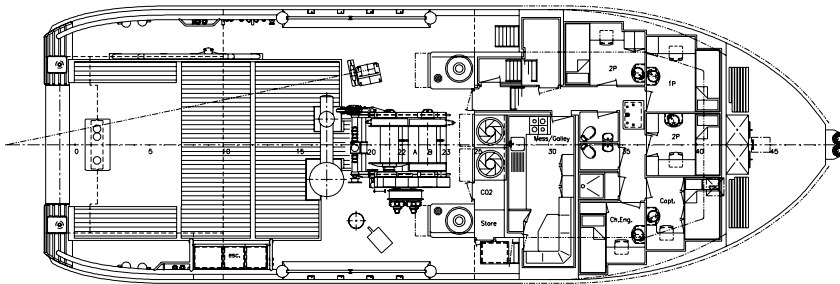
FORECASTLEDECK



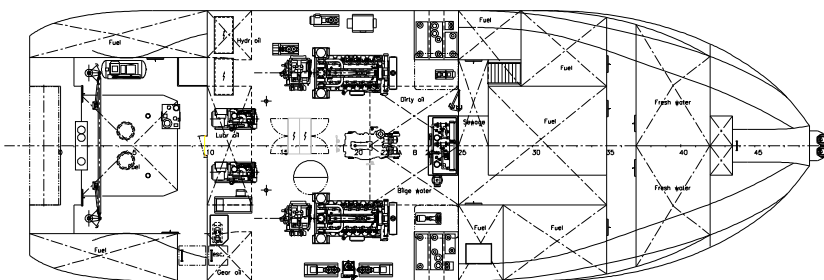
TOPDECK



MAINDECK



BELOW MAINDECK



MCS Lenie



Maritime House
69-71 Main Road, Fairlie
North Ayrshire, Scotland, KA29 0AD

T +44 (0)1475 568838
E menno@maritimecraft.co.uk
www.maritimecraft.co.uk